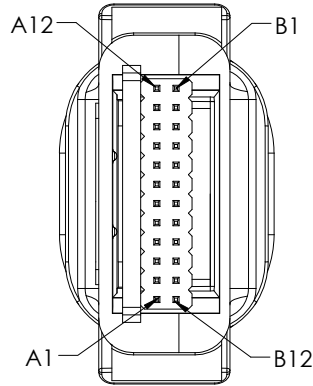
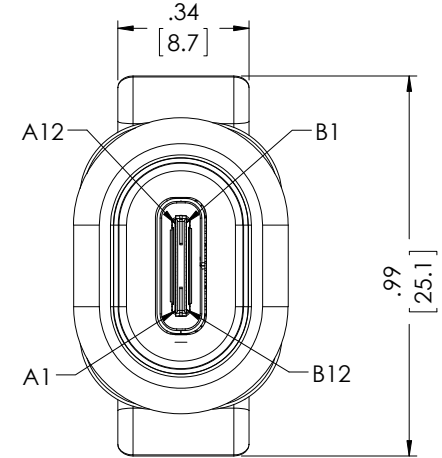
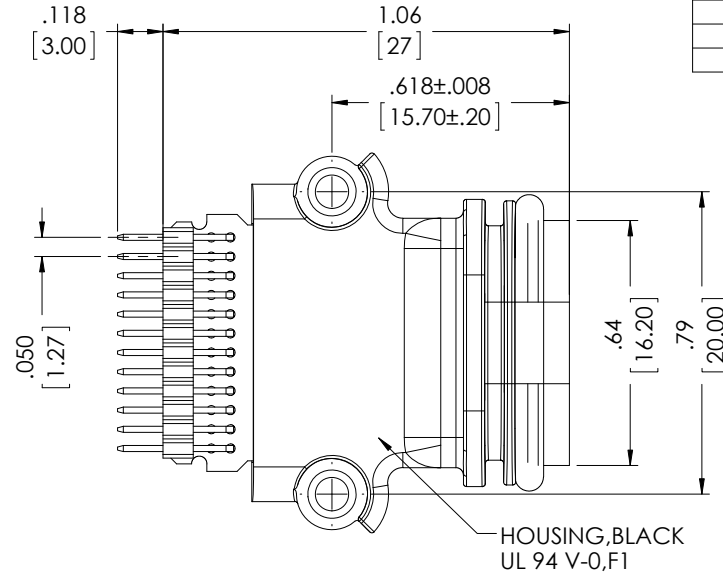


THE INFORMATION CONTAINED IN THIS DRAWING IS THE SOLE PROPERTY OF L-COM, INC. ANY REPRODUCTION IN PART OR WHOLE WITHOUT THE WRITTEN PERMISSION OF L-COM, INC. IS PROHIBITED.

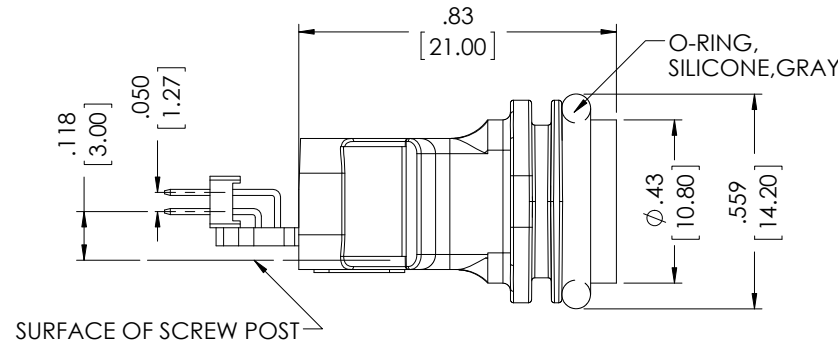
REVISIONS			
REV	DESCRIPTION	DATE	APPROVED
A	INITIAL RELEASE	12/04/17	J.LABOY



P1
WAFER, 24 PIN HEADER,
DUAL ROWS, PITCH=1.27MM



J1
USB TYPE C FEMALE
CONTACTS GOLD PLATED



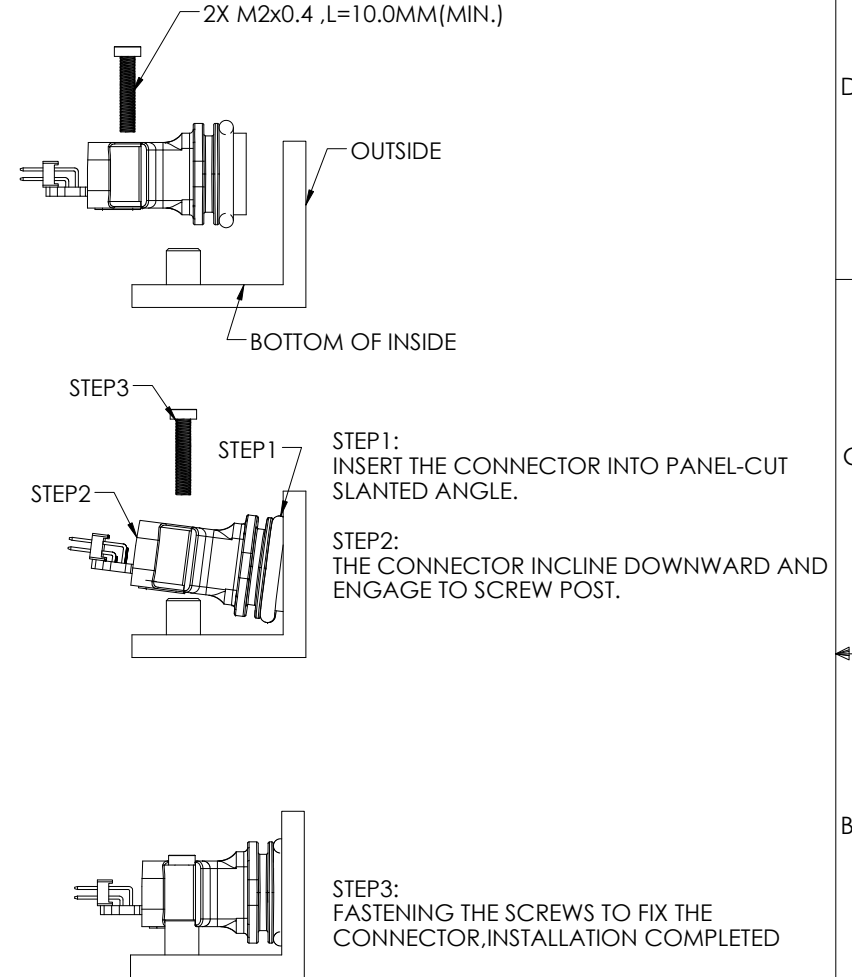
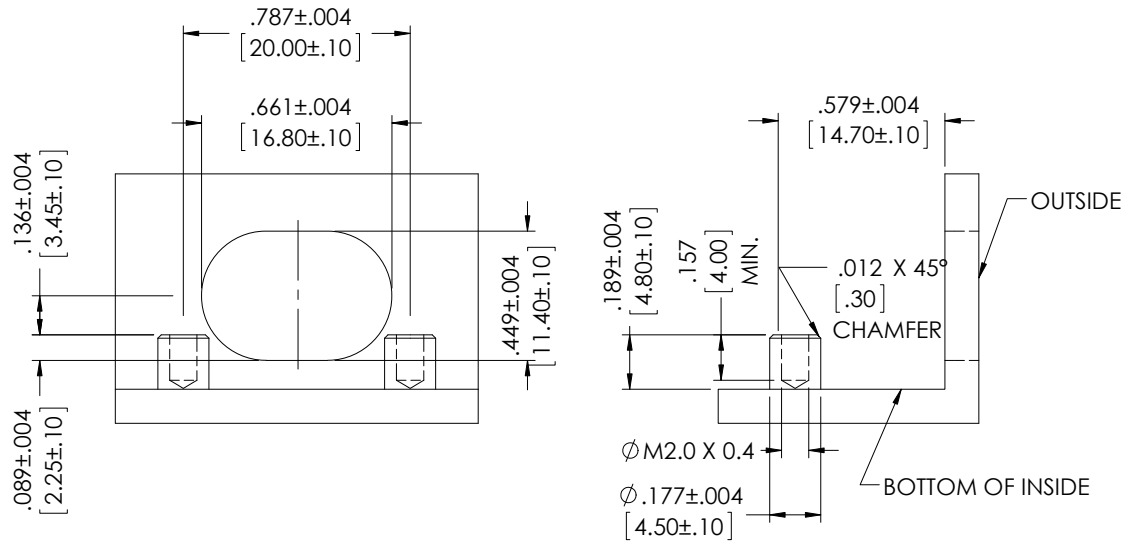
NOTES

1. INGRESS PROTECTION RATING IS IP68 (UNMATED, 1 METER, 24H).
2. PANEL THICKNESS=4.0MM MAX.
3. RECOMMENDED PANEL CUT-OUT DIMENSION AND INSTALLATION INSTRUCTION SEE PAGE 2
4. ADAPTER SHALL BE TESTED FOR CONTINUITY.
5. ADAPTER SHALL BE INDIVIDUALLY PACKAGED IN ACCORDANCE WITH L-COM SPECIFICATION PS-0031.


REGULATORY COMPLIANCE:
CE2011/65/EU (RoHS DIRECTIVE)

UNLESS OTHERWISE SPECIFIED, DIMENSIONS ARE IN INCHES [mm] OVERALL CABLE LENGTH TOLERANCE: ≤12 [305] = +1 [25] / -0 >12 [305] ≤60 [1524] = +2 [51] / -0 >60 [1524] ≤120 [3048] = +4 [102] / -0 >120 [3048] ≤300 [7620] = +6 [152] / -0 >300 [7620] = +5% / -0% ALL OTHER DIMENSIONAL TOLERANCES: .X = ±.2 [5.08] .XX = ±.02 [5.1] .XXX = ±.005 [1.3] PROJECTION 	APPROVALS	DATE	 50 HIGH STREET NORTH ANDOVER, MA 01845	
	DRAWN BY D.CUI	10/18/17		
	CHECKED BY B.ZHANG	10/18/17	CATEGORY USB	
	APPROVED BY S.PAN	10/18/17	PRODUCT DESCRIPTION WATERPROOF USB C PANEL JACK FF	
CONFIGURATION DETAILS OF UNDIMENSIONED FEATURES MAY VARY		SIZE A	FSCM NO. 43321	DWG. NO. U3B00001
COLOR VARIATIONS MAY OCCUR		SCALE: NONE	CAD FILE: U3B00001.SLDDRW	REV. A
REF		SHEET 1 OF 2		

THE INFORMATION CONTAINED IN THIS DRAWING IS THE SOLE
PROPERTY OF L-COM, INC.. ANY REPRODUCTION IN PART OR WHOLE
WITHOUT THE WRITTEN PERMISSION OF L-COM, INC. IS PROHIBITED.



INSTALLATION INSTRUCTION

		50 HIGH STREET NORTH ANDOVER, MA 01845	
CATEGORY			
USB			
PRODUCT DESCRIPTION			
WATERPROOF USB C PANEL JACK FF			
SIZE A	FSCM NO. 43321	DWG. NO. U3B00001	REV. A
SCALE: NONE		CAD FILE: U3B00001.SLDDRW	SHEET 2 OF 2